

| | |
|----------|---|
| 1 | In which city will the 2012 summer Olympic Games take place? (A) Kingston, Jamaica (C) Paris, France (B) London, England (D) Rio do Janeiro, Brazil |
| 2 | This year, Queen Elizabeth II is celebrating her Diamond Jubilee. This means that she has been on the throne for (A) 40 years (B) 50 years (C) 60 years (D) 70 years |
| 3 | In St. Vincent and the Grenadines, which of the following statements is TRUE ? (A) The Governor-General is the Queen's representative. (B) The Speaker of the House is the head of Cabinet. (C) The voters elect a Prime Minister. (D) There are ten constituencies on mainland St. Vincent. |
| 4 | Which of the following has always been a feature of national Independence celebrations in St. Vincent and the Grenadines? (A) karaoke (B) kite flying (C) military parade (D) street party |
| 5 | St. Vincent and the Grenadines got its first Prime Minister in (A) 1959 (B) 1969 (C) 1979 (D) 1989 |
| 6 | Which secondary school in St. Vincent and the Grenadines won the Lions Club Public Speaking competition in 2009, 2010 and 2011? (A) Girls' High School (B) North Union Secondary School (C) St. Joseph's Convent, Kingstown (D) St. Vincent Grammar School |
| 7 | The first Caribbean country to become an independent nation was (A) Cuba (B) Haiti (C) Jamaica (D) Trinidad and Tobago |

8 The Europeans first came to the Caribbean to

(A) search for gold (C) teach Spanish to the Amerindians
(B) clear the forests (D) work as slaves on sugar plantations

9 In transporting slaves from Africa to the Eastern Caribbean, which body of water did the slave ships cross?

(A) Atlantic Ocean (C) Gulf of Mexico
(B) Caribbean Sea (D) Indian Ocean

10 In which century was slavery in the British West Indies abolished?

(A) 17th (B) 18th (C) 19th (D) 20th

11 Which Caribbean country declared a State of Emergency in 2011 in an effort to combat crime?

(A) Antigua (B) Barbados (C) Jamaica (D) Trinidad and Tobago

12 Which two Caribbean countries held their General Elections on the same day in November 2011?

(A) Antigua and Barbados (C) Guyana and St. Lucia
(B) St. Kitts-Nevis and Belize (D) Dominica and Grenada

13 The first female Prime Minister of which Caribbean country won her first General Election in December 2011?

(A) Antigua (B) Barbados (C) Belize (D) Jamaica

14 Which of the following is **NOT** a primary industry in St. Vincent and the Grenadines?

(A) arrowroot (B) banana (C) farine (D) fish

15 Which is the longest line of latitude?

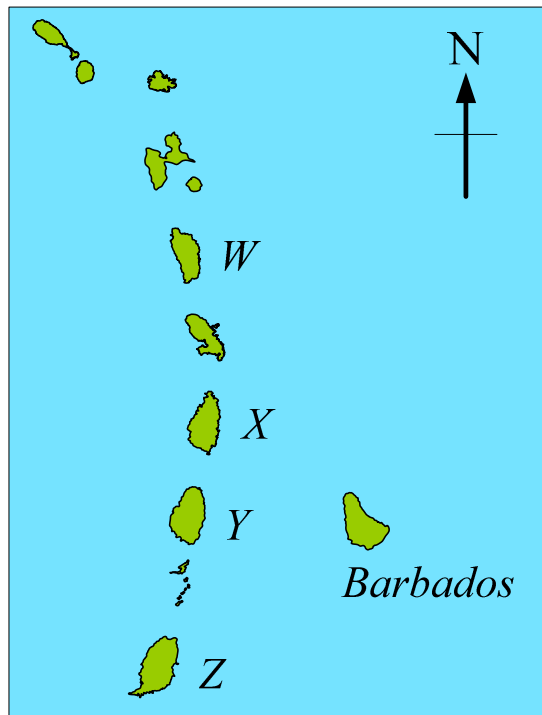
(A) Equator (C) Prime Meridian
(B) International Date Line (D) Tropic of Cancer

16 From which primary product is aluminium produced?





- (A) bauxite (B) limestone (C) petroleum (D) trees

The map below shows some of the islands of the Lesser Antilles.

Use the map to answer questions **17** , **18** and **19** .



17 Which flag belongs to country Y?

- (A)  (B)  (C)  (D) 

18 What is the capital of country Z?

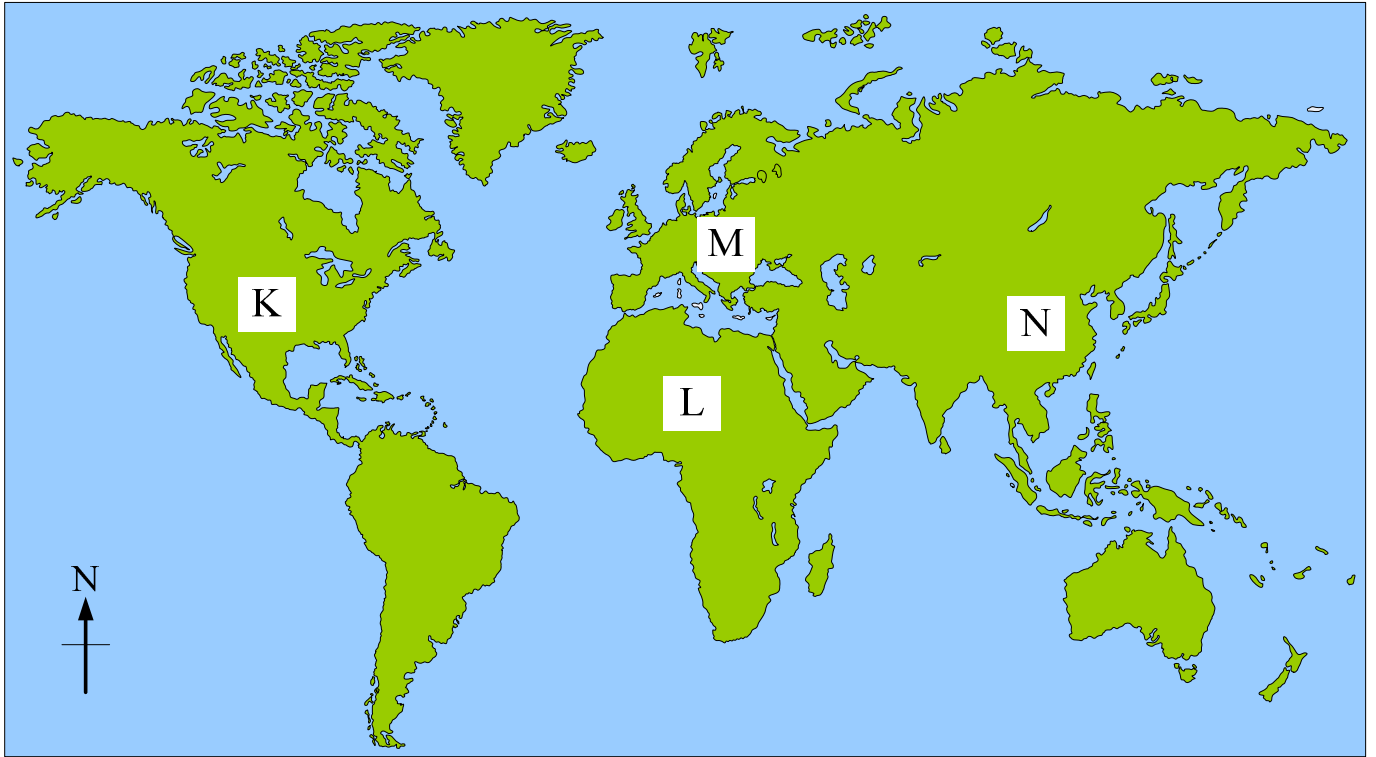
- (A) Bridgetown (B) Georgetown (C) St. George's (D) St. John's

19 Which country on the map is located between two French-speaking territories?

- (A) W (B) X (C) Y (D) Z

Use the world map to answer question

20



20 On which continent on the map above would you find the Sahara desert?

- (A) K (B) L (C) M (D) N

21 The first line of the third verse of the National Anthem of St. Vincent and the Grenadines begins with the words

- (A) God bless our homeland (B) With joyful hearts we pledge to thee
(C) Our loyalty and love and vow (D) Our little sister islands are those gems the lovely Grenadines

22 In the musical examples below, which bar has an incomplete number of beats?

(A) $\frac{4}{4}$ ||  ||

(C) $\frac{4}{4}$ ||  ||

(B) $\frac{4}{4}$ ||  ||

(D) $\frac{4}{4}$ ||  ||

23 The composer of an orchestral piece wants the music to be played softly. Which letter/letters should he write at the beginning of the piece?

- (A) p (B) mf (C) f (D) mp

24 To which family of instruments does the trumpet belong?

- (A) woodwind (B) brass (C) string (D) music makers

25 How many crotchets (quarter notes) are there in a semibreve (whole note)?

- (A) 2 (B) 4 (C) 6 (D) 8

26 The musical term 'tempo' means:

- (A) speed (B) rhythm (C) beat (D) fast

27 Which of these festivals is NOT celebrated in the Caribbean?

- (A) Caribana (B) Carnival (C) Crop over (D) Divali

28 Keith lives in St. Kitts. Which famous tourism site can he visit without leaving his island?

- (A) Pitons (C) Harrisons Cave
(B) La Brea Pitch Lake (D) Brimstone Hill

29 The WHO and PAHO are organizations whose chief function is to promote

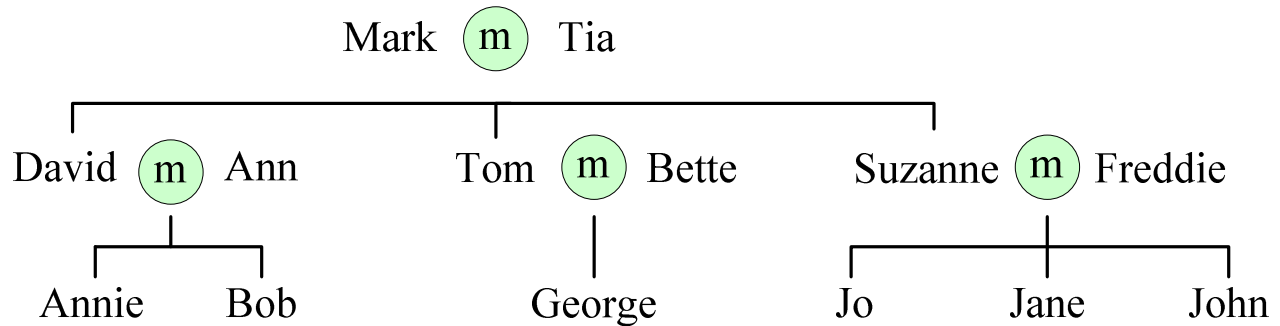
- (A) culture (B) education (C) health (D) world peace

Use the family tree to answer questions

30

and

31



Key: **m** = Married

30 What relation is Bob to Annie?

- (A) brother (B) cousin (C) father (D) grandfather

31 How many cousins does Bob have?

- (A) 1 (B) 2 (C) 4 (D) 5

32 Freddie died ten years after he married Suzanne. Suzanne then became a

- (A) bachelor (B) spinster (C) widow (D) widower

33 When Freddie died, many of his friends called Suzanne to say how sorry they were. What type of emotion were they expressing?

- (A) approval (B) disgust (C) empathy (D) sympathy

34 After Freddie's death, Suzanne and her children went to live in a smaller house. What type of family did they become?

- (A) broken (B) extended (C) nuclear (D) single-parent

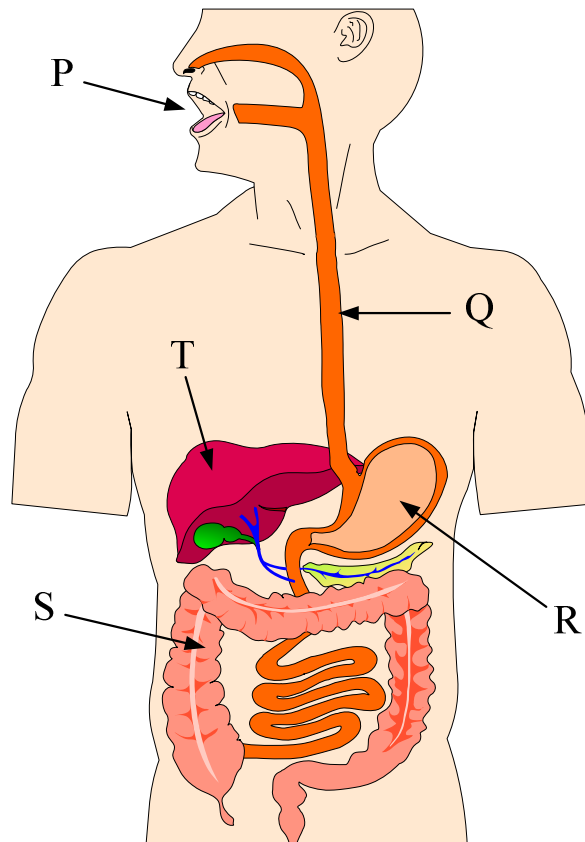
35 Jane's mother gives her some tips on building healthy friendships. Which one of the following is **NOT** one of those tips?

- (A) Be trustworthy. (C) Stay out late.
(B) Listen carefully. (D) Show respect.

36 Which of these practices is **NOT** an example of **preventative** health care?

- (A) Bathing every day. (C) Taking cold medicine.
(B) Having vaccinations. (D) Having regular health checks.

Use the diagram below to answer questions **37** and **38**



37 What is the name of the organ labelled R?

- (A) intestines (B) liver (C) gullet (D) stomach

38 In which part of the body does the process of digestion begin?

- (A) P (B) R (C) S (D) T

39 When trying to maintain a balanced diet, it is important to

- (A) eat from all of the food groups
- (B) eat more fruits and vegetables than anything else
- (C) completely avoid all fats and sugars
- (D) skip breakfast once a week

40 Which of the following deficiency disease is **CORRECTLY** matched to the vitamin or mineral **MISSING** from the diet?

| | DISEASE | VITAMIN /MINERAL |
|---|-----------------|------------------|
| A | Scurvy | Vitamin C |
| B | Rickets | Iron |
| C | Night blindness | Vitamin D |
| D | Anaemia | Vitamin A |

41 Which two countries provided netbooks for the “**one laptop per child**” initiative in St. Vincent and the Grenadines?

- (A) France and Venezuela
- (B) Taiwan and Portugal
- (C) Portugal and Venezuela
- (D) Spain and Canada

42 If the netbook a student received from the “**one laptop per child**” initiative stops working properly, which one of the following is the correct thing to do?

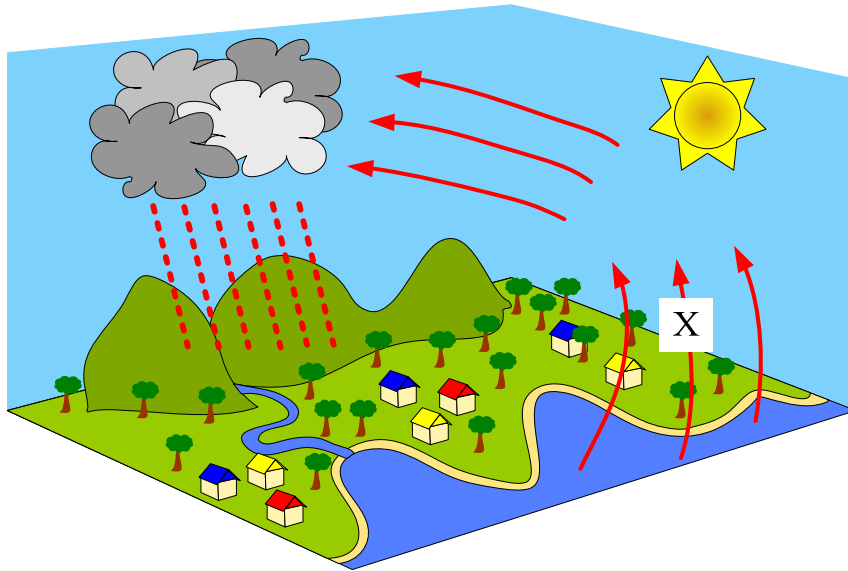
- (A) Take it to a computer shop to fix.
- (B) Take it to the teacher.
- (C) Try to fix it himself.
- (D) Ask his friend to fix it.

Use the diagram of the water cycle below to answer questions

43

and

44



43 What process happens at X?

- (A) condensation (B) evaporation (C) flowing (D) precipitation

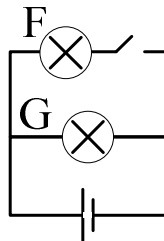
44 Energy for the water cycle is provided by the

- (A) clouds (B) moon (C) sea (D) sun

45 Which of the planets in the solar system is closest to the sun?

- (A) Earth (B) Mars (C) Mercury (D) Venus

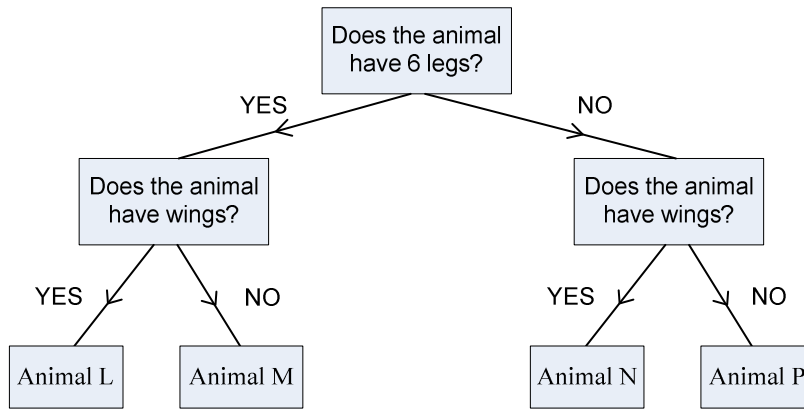
46



Which option in the table below best describes what happens to bulbs F and G in the circuit shown above?

| | Bulb F | Bulb G |
|-----|--------|--------|
| (A) | ON | ON |
| (B) | ON | OFF |
| (C) | OFF | ON |
| (D) | OFF | OFF |

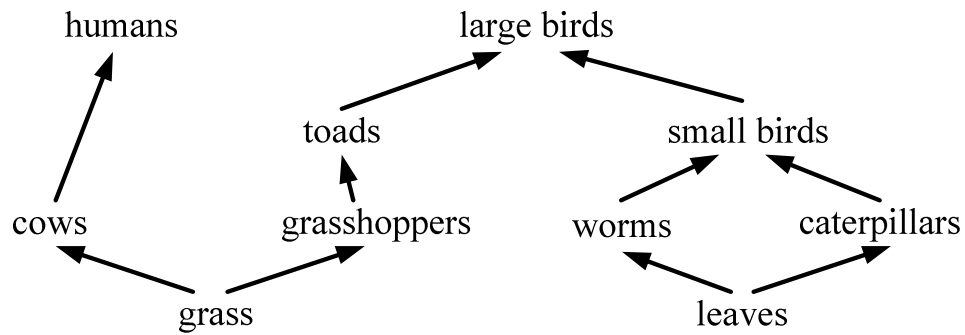
Use the classification key below to answer questions **47** and **48** .



47 Using the classification key given, Animal N could be a/an
 (A) ant (B) butterfly (C) centipede (D) duck

48 Which animals on the key are insects?
 (A) L and M (B) N and P (C) L and N (D) M and P

Use the food web below to answer questions **49** and **50** .



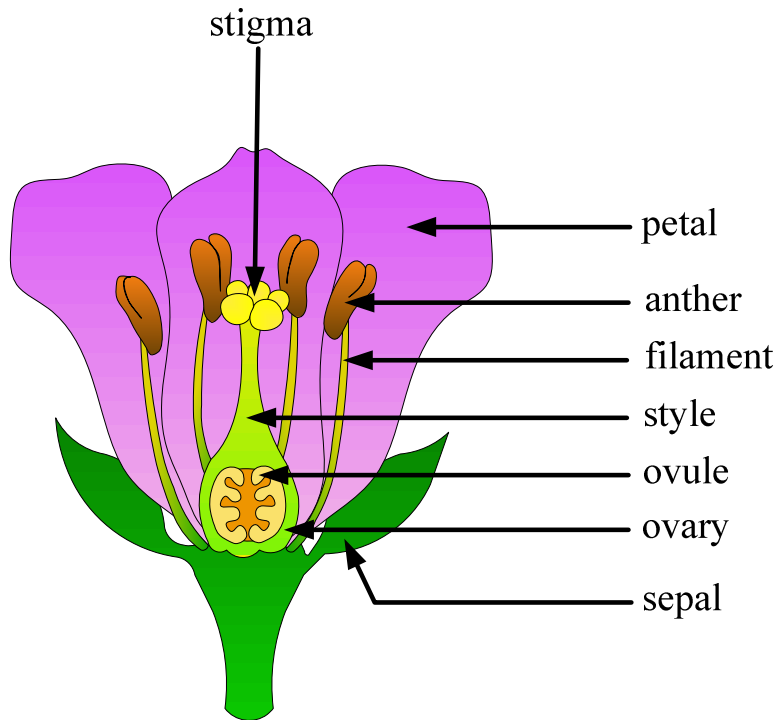
49 Which of the following is **NOT** a food chain in the web above?
 (A) leaves → worms → small birds → large birds
 (B) grass → cows → humans
 (C) grass → grasshoppers → toads → large birds
 (D) leaves → caterpillar → worms → small birds

50 Which organisms in the food web are producers?
 (A) cows and grasshoppers (C) small birds and large birds
 (B) grass and leaves (D) worms and caterpillars

51 Which of the following pairs of substances can be separated by using a magnet?

- (A) Iron nails and sand (C) Sugar and sand
(B) Glass marbles and sugar (D) Iron nails and steel pins

Use the diagram of the flower below to answer questions **52** and **53**.



52 The male part of a flower is made up of:

- (A) stigma and style
(B) sepals and petals
(C) ovary and ovules
(D) anther and filament

53 Which part of the flower develops into a seed?

- (A) ovary B) ovule C) stigma D) stamen

54 Which of the following is a characteristic of **ALL** living things? They

- (A) have hair (B) reproduce (C) are warm-blooded (D) run fast

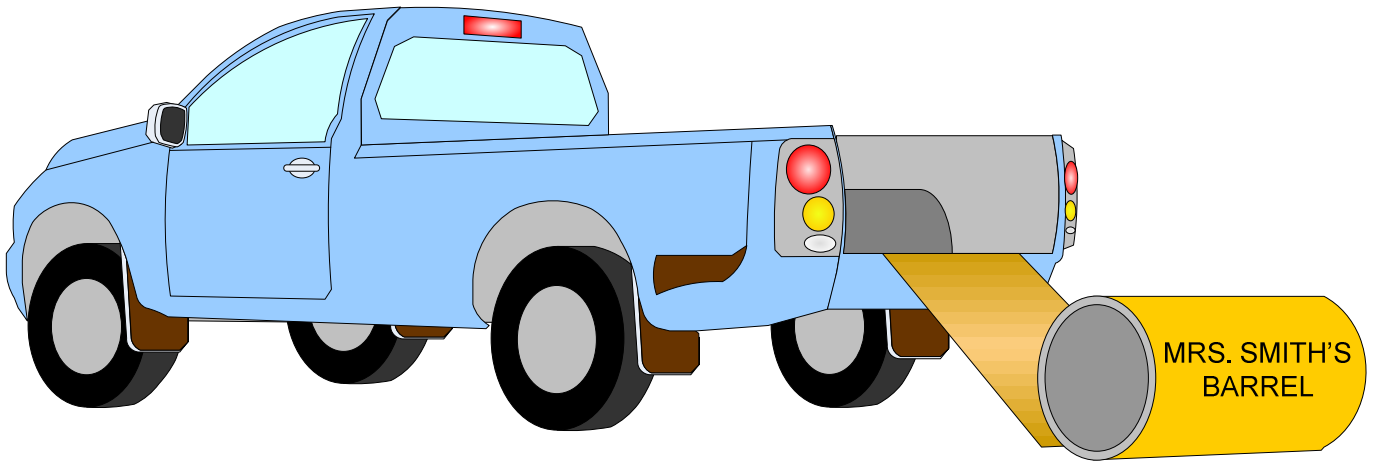
55 Patrick observes that, when he boils water, droplets of water form on the window above the kettle. The best explanation for his observation is that

- (A) the water came through the glass window from outside.
- (B) the water from the kettle splashed up onto the window.
- (C) hot steam condenses on cool surfaces.
- (D) hot steam is attracted to transparent objects.

56 What happens to your eyes when you go from a dark room into sunshine?

- (A) They become moist.
- (B) The lenses get bigger.
- (C) The pupils get smaller.
- (D) The iris gets smaller.

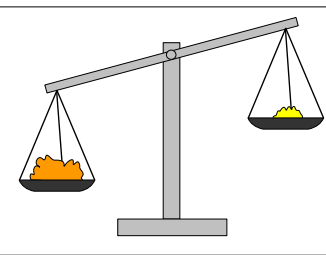
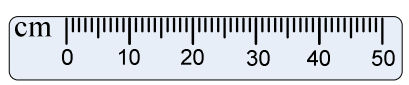
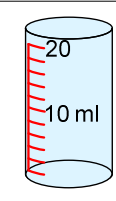
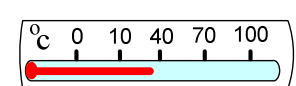
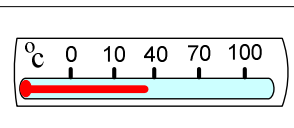
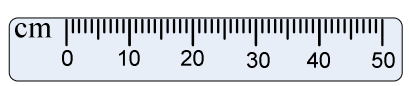
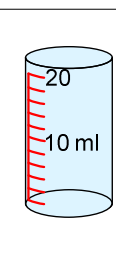
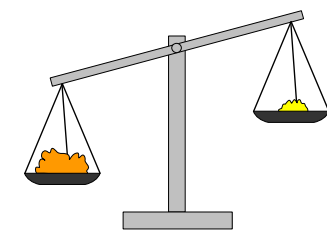
57 Mrs. Smith wants to lift her Christmas barrel onto a truck. She decides to roll it up a plank of wood onto the truck. What simple machine is she using?



- (A) inclined plane
- (B) screw
- (C) wedge
- (D) wheel and axle

58

Mike wants to measure the temperature and volume of some bottled water. Which two instruments should he use?

| | | |
|-----|--|---|
| (A) |  | and  |
| (B) |  | and  |
| (C) |  | and  |
| (D) |  | and  |

59

Which of the following is a reversible change?

- (A) A match burns.
- (B) Iron rusts.
- (C) Ice melts.
- (D) Bread goes mouldy.

60

Jimmy wants to carry out an experiment to find out if ice cubes melt faster in orange juice than they do in water. He says, "I think that the ice cubes will melt faster in orange juice than in water." Jimmy's statement is a/an

- | | |
|-----------------|-----------------|
| (A) conclusion | (C) observation |
| (B) measurement | (D) prediction |