

1	<p>National Heroes Day in St. Vincent and the Grenadines is celebrated on</p> <ul style="list-style-type: none"><li>A. January 22<sup>nd</sup></li><li>B. March 14<sup>th</sup></li><li>C. May 1<sup>st</sup></li><li>D. August 1<sup>st</sup></li></ul>
2	<p>Participation in Physical Education can do all of the following <b><u>EXCEPT</u></b></p> <ul style="list-style-type: none"><li>A. improve physical fitness</li><li>B. help develop skills in many disciplines</li><li>C. promote fair play and good sportsmanship</li><li>D. increase the risk of heart disease</li></ul>
3	<p>Which of the following is named after the first Prime Minister of St. Vincent and Grenadines?</p> <ul style="list-style-type: none"><li>A. The E. T. Joshua Airport</li><li>B. The J. F. Mitchell Airport</li><li>C. The Milton Cato Memorial Hospital</li><li>D. The Sir Louis Straker Resource Centre</li></ul>
4	<p>An Eco-tourist to St. Vincent and the Grenadines is likely to visit all of the following <b><u>EXCEPT</u></b></p> <ul style="list-style-type: none"><li>A. Fort Charlotte</li><li>B. Botanical Gardens</li><li>C. Vermont Nature Trails</li><li>D. Bequia Turtle Sanctuary</li></ul>
5	<p>Which one of these foods was brought to St. Vincent and the Grenadines from the South Sea Islands?</p> <ul style="list-style-type: none"><li>A. Dasheen</li><li>B. Plantain</li><li>C. Banana</li><li>D. Breadfruit</li></ul>

6 Which country is correctly matched to one of its exports?

	COUNTRY	EXPORT
A.	Barbados	Oil
B.	St. Vincent	Cement
C.	Guyana	Timber
D.	Grenada	Sugar

7 John lives in Sandy Bay. He spends his Easter vacation in Union Island. What type of tourist is John?

- A. Cruise
- B. Domestic
- C. Regional
- D. International

8 Gia disembarks a LIAT flight at Point Salines International Airport. In which country is she?

- A. Barbados
- B. Grenada
- C. St. Lucia
- D. Martinique

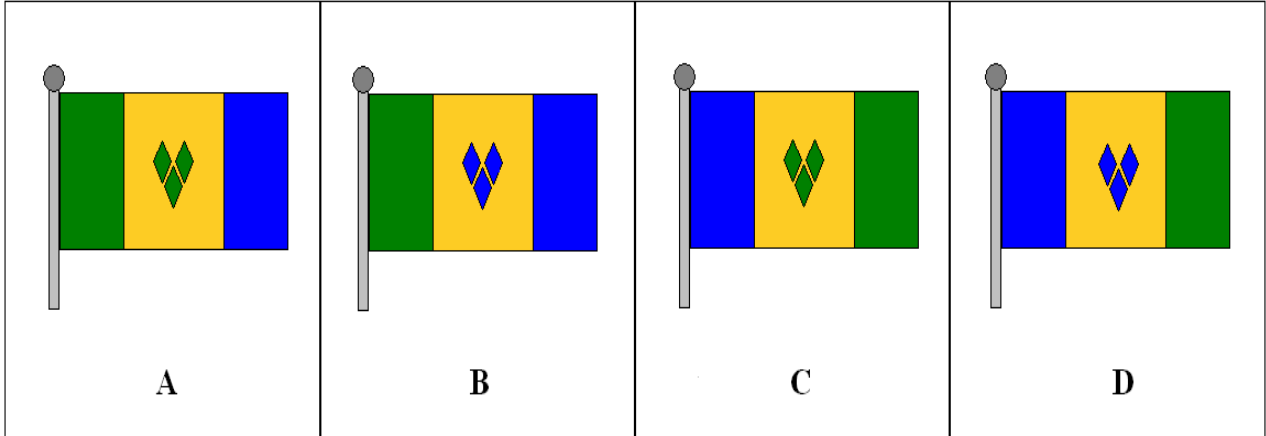
9 Mabuiga is a Garifuna word meaning good morning. In which one of these countries is it most likely to be spoken?

- A. Cuba
- B. St. Kitts
- C. Barbados
- D. Dominica

10 People of East Indian descent **FIRST** came to the Caribbean to work mainly as

- A. slaves
- B. shop keepers
- C. business owners
- D. indentured servants

11 Which flag represents that of St. Vincent and the Grenadines?



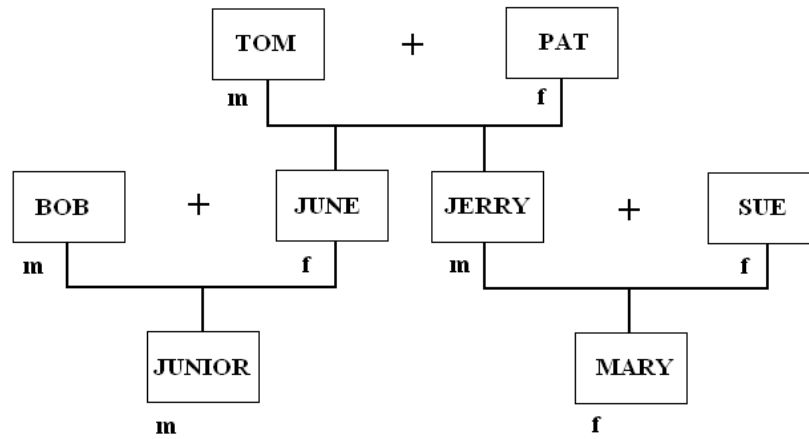
12 Which one of these celebrations has a religious origin?

- A. Labour Day
- B. Christmas Day
- C. Fisherman's Day
- D. National Heroes Day

13 Shato is a Carib Chief or Ouboutou. He most likely gained his position by

- E. being elected
- F. inheriting it from his father
- G. showing superior skills at war
- H. being the wealthiest male among the tribe

Use the information in the chart to answer items 14 - 17.



**KEY**  
 + = MARRIED  
 m = MALE  
 f = FEMALE

<p><b>14</b></p>	<p>A chart such as the one above is known as a family</p> <p>A. tree          B. history          C. diagram          D. generation</p>
<p><b>15</b></p>	<p>Tom is Junior's</p> <p>A. uncle          B. father          C. cousin          D. grandfather</p>
<p><b>16</b></p>	<p>Junior is Mary's</p> <p>A. uncle          B. nephew          C. cousin          D. brother</p>
<p><b>17</b></p>	<p>How many generations are represented on the chart?</p> <p>A. Two          B. Three          C. Four          D. Eight</p>

**18** The Eastern Caribbean Central Bank is responsible for issuing currency to all of the following islands **EXCEPT**

- A. Antigua
- B. Barbados
- C. Grenada
- D. St. Kitts

**19** Use the Map to answer questions 19 to 22

This group of islands is called

- A. Lesser Antilles
- B. Greater Antilles
- C. Dutch Antilles
- D. Caribbean Antilles

**20** The body of water labelled X is

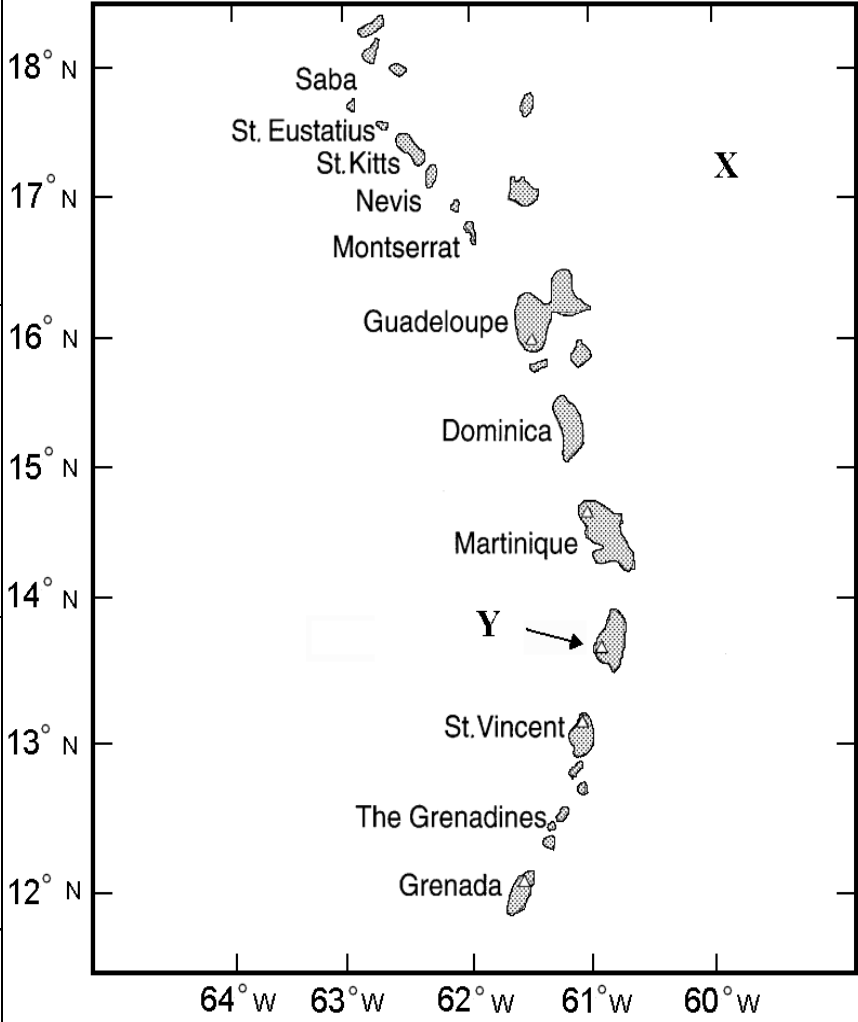
- A. Red Sea
- B. Pacific Ocean
- C. Atlantic Ocean
- D. Caribbean Sea

**21** The country labelled Y is

- A. St. Lucia
- B. Trinidad
- C. Jamaica
- D. Barbados

**22** This country is located approximately 61.3° W and 16° N

- A. Dominica
- B. Guadeloupe
- C. Martinique
- D. Montserrat



23	<p>The trumpet belongs to the group of instruments known as</p> <ul style="list-style-type: none"><li>A. brass</li><li>B. strings</li><li>C. wood-winds</li><li>D. percussion</li></ul>
24	<p>All these are musical notes <b><u>EXCEPT</u></b></p> <ul style="list-style-type: none"><li>A. Cuatro</li><li>B. Minim</li><li>C. Crotchet</li><li>D. Semibreve</li></ul>
25	<p>In the Caribbean, Bob Marley is to Reggae as the Mighty Sparrow is to</p> <ul style="list-style-type: none"><li>A. Gospel</li><li>B. Calypso</li><li>C. Hip Hop</li><li>D. Dance Hall</li></ul>
26	<p>Musical symbols are often written on five lines and four spaces called the</p> <ul style="list-style-type: none"><li>A. staff</li><li>B. quaver</li><li>C. treble clef</li><li>D. time signature</li></ul>
27	<p>The person who directs a choir or an orchestra is the</p> <ul style="list-style-type: none"><li>A. producer</li><li>B. contractor</li><li>C. instructor</li><li>D. conductor</li></ul>
28	<p>The winner of the Stanford 20/20 Cricket Competition in 2008 was</p> <ul style="list-style-type: none"><li>A. Jamaica</li><li>B. Guyana</li><li>C. Trinidad and Tobago</li><li>D. St. Vincent and the Grenadines</li></ul>

29	<p>Saska Diamond, St. Vincent and the Grenadines sports personality for 2007, excelled in the field of</p> <ul style="list-style-type: none"><li>A. Tennis</li><li>B. Netball</li><li>C. Athletics</li><li>D. Basketball</li></ul>
30	<p>All of the following cultural art forms originated in the Caribbean <b>EXCEPT</b></p> <ul style="list-style-type: none"><li>A. Blues</li><li>B. Reggae</li><li>C. Calypso</li><li>D. Steel pan</li></ul>
31	<p>HIV/AIDS is most likely to be spread by an HIV infected person through</p> <ul style="list-style-type: none"><li>A. having unprotected sex</li><li>B. sharing the same toilet seat</li><li>C. drinking from the same glass</li><li>D. being bitten by the same mosquito</li></ul>
32	<p>Nutritional anaemia results when the body lacks</p> <ul style="list-style-type: none"><li>A. calcium</li><li>B. iodine</li><li>C. iron</li><li>D. vitamin c</li></ul>
33	<p>Anna chooses to study for her exam instead of watching television. The life skill she demonstrates is</p> <ul style="list-style-type: none"><li>A. Empathy</li><li>B. Self-Awareness</li><li>C. Decision Making</li><li>D. Problem Solving</li></ul>

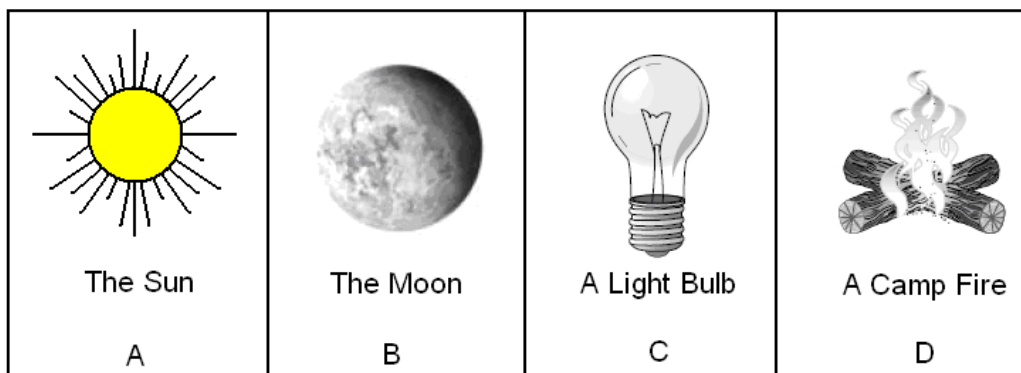
34	<p>All of the following are good ways of resolving conflicts <b>EXCEPT</b></p> <ul style="list-style-type: none"><li>A. apologizing</li><li>B. shaking hands</li><li>C. speaking kindly</li><li>D. calling the person 'names'</li></ul>
35	<p>A person suffering from high-blood pressure needs to do all of the following <b>EXCEPT</b></p> <ul style="list-style-type: none"><li>A. eat fruits and vegetables</li><li>B. exercise regularly</li><li>C. eat salty foods</li><li>D. avoid stress</li></ul>
36	<p>Jason's mom packed a healthy snack for him to take to school. Which of the following did he eat?</p> <ul style="list-style-type: none"><li>A. Banana, sweets, sandwich</li><li>B. Orange, biscuit, chocolate</li><li>C. Apple, banana, guava</li><li>D. Corncurls, apple, orange</li></ul>
37	<p>Eating foods rich in fibre or roughage will <b>most likely</b> prevent</p> <ul style="list-style-type: none"><li>A. diarrhoea</li><li>B. sore throat</li><li>C. constipation</li><li>D. anaemia</li></ul>
38	<p>All of the following are bad health practices <b>EXCEPT</b></p> <ul style="list-style-type: none"><li>A. smoking</li><li>B. drinking alcohol</li><li>C. having unprotected sex</li><li>D. participating in sports</li></ul>
39	<p>Jason's dad hugs him often and listens to him when he speaks. Jason most likely should feel</p> <ul style="list-style-type: none"><li>A. capable and loved</li><li>B. afraid and shy</li><li>C. unloved and dumb</li><li>D. worthless and ineffective</li></ul>



40 Tooth decay will **most likely** occur if you

- E. brush your teeth irregularly
- F. drink water containing fluoride
- G. eat fruits and vegetables
- H. visit the dentist regularly

41 All of these emit light waves **EXCEPT**:



42



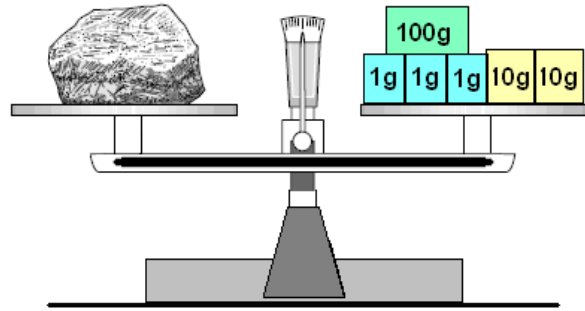
When in operation, this tool transforms electrical energy into this useful form of energy:

- A sound energy
- B solar energy
- C chemical energy
- D mechanical energy

43

Which of these is the **MOST** accurate reading of the mass of the rock on the balance scale?

- A 33 g
- B 120.3 g
- C 123 g
- D 303 g



44

Which of the following is a benefit that many flowering plants get from animals?

- A. Seeds carried to new places
- B. Shelter from direct sunlight
- C. Moisture to prevent wilting
- D. Oxygen to use in photosynthesis

45



E



F



G



H

Which arrangement of the pictures above shows what happens to a glass of salt water when it is left out on a counter for several weeks?

- A.  $H \rightarrow F \rightarrow E \rightarrow G$
- B.  $H \rightarrow G \rightarrow F \rightarrow E$
- C.  $E \rightarrow G \rightarrow F \rightarrow H$
- D.  $E \rightarrow F \rightarrow G \rightarrow H$

46 If the Earth moved farther away from the sun, which of these would probably happen?

- A. There would be colder weather.
- B. There would be more seasons.
- C. There would be no moon.
- D. There would be more solar eclipses.

47



Based on the picture above, which of these is a conclusion rather than an observation?

- A. This animal has hair
- B. This animal is standing
- C. This animal has four legs
- D. This animal is a mammal

48 Which of the following measurements is **MOST LIKELY** the mass of a pencil?

- A. 17 kilograms
- B. 17 millimetres
- C. 10 grams
- D. 10 centimetres

49 Use the picture of the bike to answer this question. Useful friction is created by the

- A. spokes
- B. brakes
- C. curved handlebars
- D. gears



50 A bird that dies benefits a tree by providing it with

- A. water
- B. oxygen
- C. minerals
- D. carbohydrates

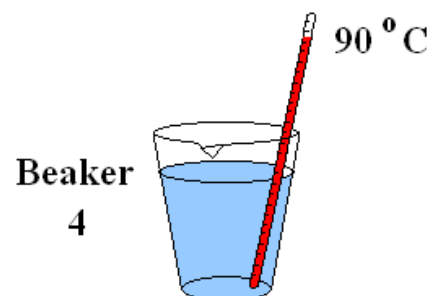
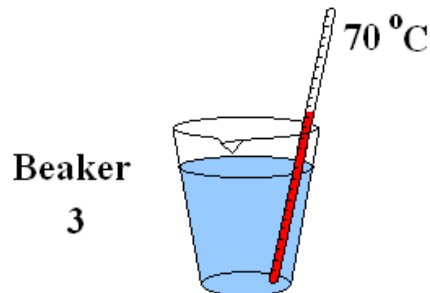
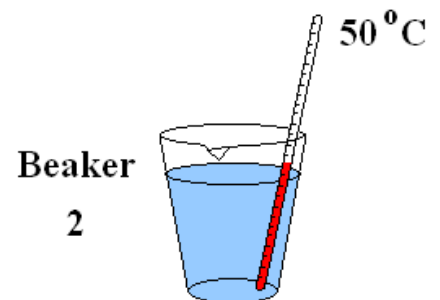
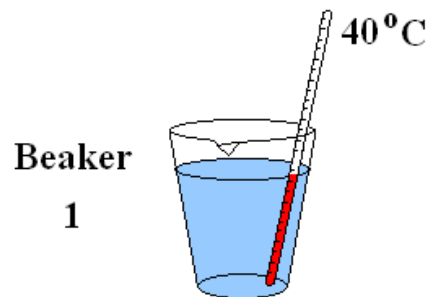
51 The picture shows a bumblebee. What about the bumblebee that is most helpful in identifying it as an insect?

- A. Shape of eyes
- B. Location of antennae
- C. Number of legs
- D. Presence of wings

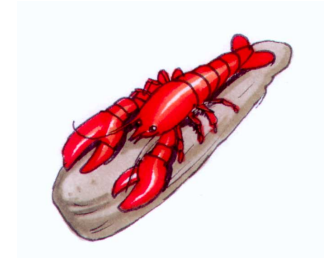


52 Use information provided by the diagram, to answer this question. In which beaker of water will sugar dissolve the **FASTEST**?

- A. Beaker 1
- B. Beaker 2
- C. Beaker 3
- D. Beaker 4



53



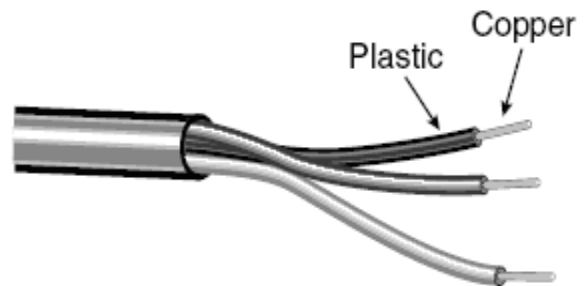
How is a Fish **DIFFERENT** from a Lobster ?

- A. A fish is an animal.
- B. A fish can reproduce.
- C. A fish has a backbone.
- D. A fish lives in water.

54

Many electrical wires are wrapped with a plastic coating because plastic is

- A. a good insulator
- B. more dense than copper
- C. able to keep its shape
- D. less expensive than steel

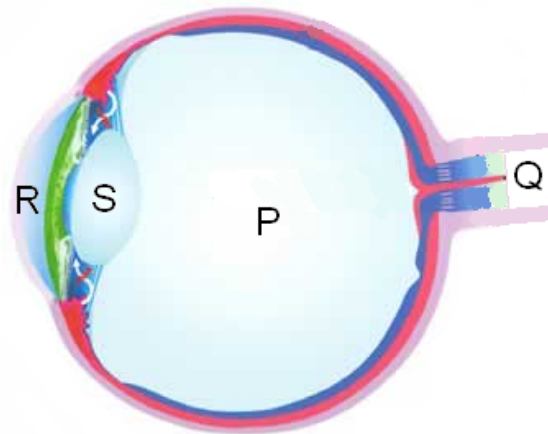


55

Which action can be used to prevent soil erosion?

- A. Cutting down trees
- B. Planting grass
- C. Spraying soil with water
- D. Raising grazing animals

Use the diagram of the eye to answer questions 56 and 57



56 The part labelled S shows the

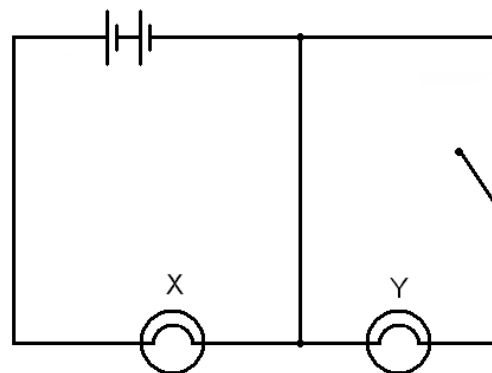
- A. Retina
- B. Lens
- C. Iris
- D. Pupil

57 Messages are sent to the brain by this part

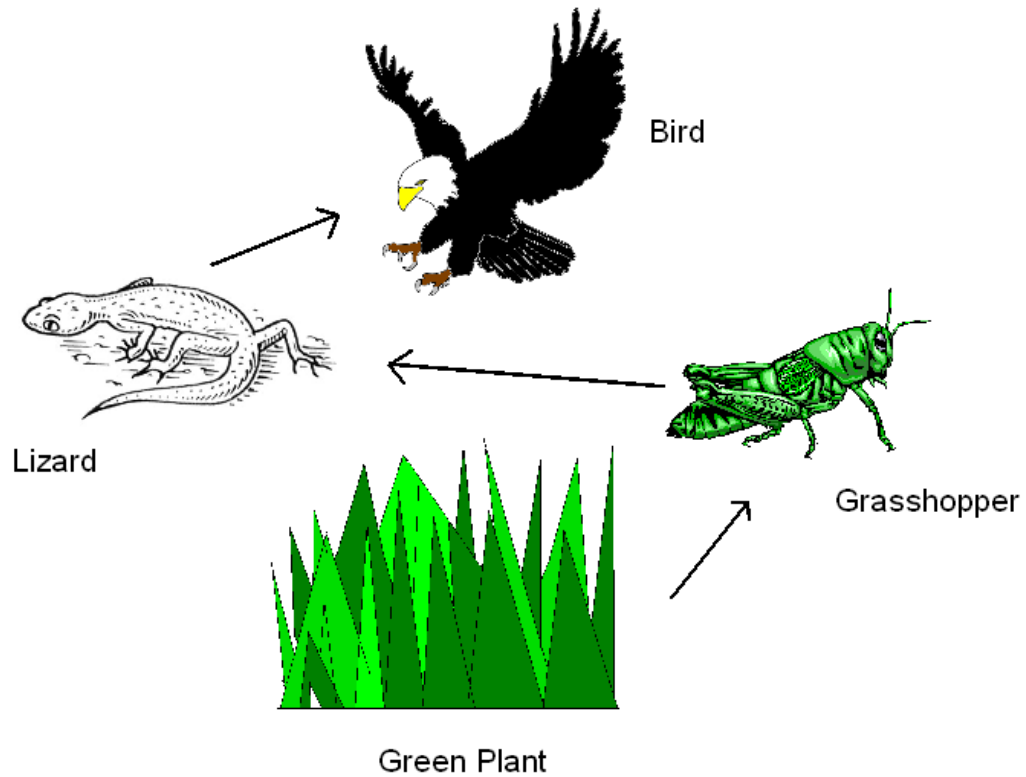
- A. P
- B. Q
- C. R
- D. S

58 Which option in the table best describes what happens to bulbs X and Y in the circuit shown below?

	Bulb X	Bulb Y
<b>A</b>	ON	ON
<b>B</b>	ON	OFF
<b>C</b>	OFF	ON
<b>D</b>	OFF	OFF



Use the food chain to answer questions 59 and 60.



59 Which of the following is a producer?

- A. Bird
- B. Lizard
- C. Grasshopper
- D. Green Plant

60 The food chain shown by the diagram above is

- A. Green Plant → Grasshopper → Lizard → Bird
- B. Lizard → Bird → Grasshopper → Green Plant
- C. Grasshopper → Lizard → Green Plant → Bird
- D. Bird → Lizard → Grasshopper → Green Plant